

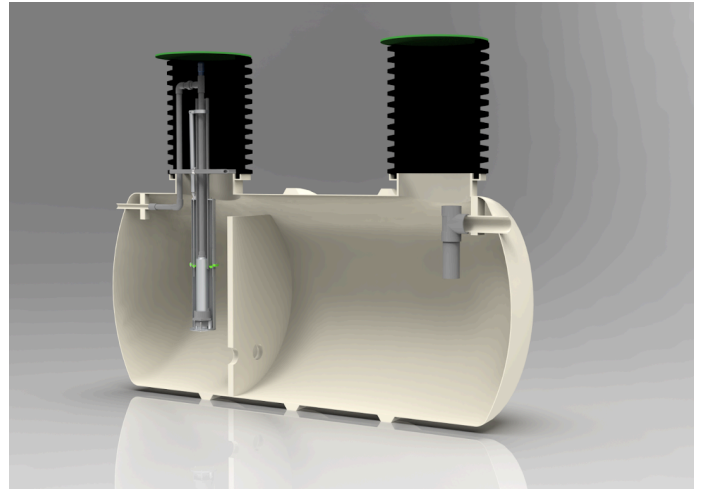
## **PUP TANK™ Sewer Collection System**

For regions where traditional gravity-based systems face hurdles, the PUP TANK™ emerges as a superior alternative. This collection system is able to resolve challenges stemming from topography, cost constraints, and other obstacles. The PUP TANK™ efficiently transports wastewater through small-diameter piping to treatment facilities.

Distinguished from conventional gravity or grinder pump systems, the PUP TANK™ offers an added layer of primary treatment. Wastewater flows by gravity into the PUP TANK™, where solids settle, and scum floats to the top, leaving a "clear zone" at the center of the tank. Periodically, water from this clear zone is pumped through collection lines to a treatment facility for additional treatment. With solids and scum efficiently removed within the PUP TANK™, the system can employ smaller diameter lines without compromising effectiveness.

Operationally, the utility assumes responsibility for the PUP TANK™, associated equipment, and the network of small diameter collection lines. These systems typically incorporate long-life, low-horsepower effluent pumps, minimizing electricity consumption, and replacement costs.

PUP TANK™ sewer collection systems are efficient, reliable, and cost-effective, offering a comprehensive solution for wastewater collection in challenging terrain, or on constrained budgets.



### **Benefits of PUP TANK™ Collection Systems**

- *Reduced capital cost compared to gravity and grinder pump sewers*
- *Effluent pumps are smaller, more energy efficient, reliable, and last longer than grinder pumps*
- *Allows smaller, shallower, directionally bored collection lines*
- *Individual tanks allow issues to be isolated to individual users*
- *Reduced BOD, TSS, and FOG loading to the treatment plant*